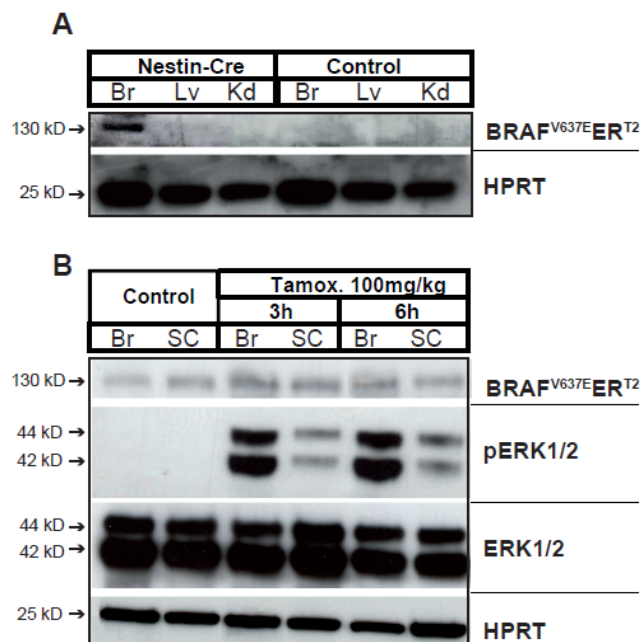


Figure 7



**Fig. 7.** Expression of inducible active B-RAF<sup>V637E</sup> and increased phosphorylation of ERK1/2 in Nestin-Cre<sup>+</sup> mice treated with tamoxifen.

(a) Western blot illustrating the specific constitutively expression of B-RAF<sup>V637E</sup>ER<sup>T2</sup> (130.5 KDa) only in brain extracts and neither liver nor kidney. (b) Expression of p-ERK1/2 in brain and spinal cord in absence (control) and after (3 and 6 hours) tamoxifen treatment. Only after tamoxifen administration is possible to observe a pERK1/2 induction. HPRT was used as loading control.